



2 Piece Axle Reducer Hub Install/Removal

This guide shows how to install and remove the axle and freehub on our 2 piece axle reducer hubs from 2017-2019.

Written By: Cory Sullivan

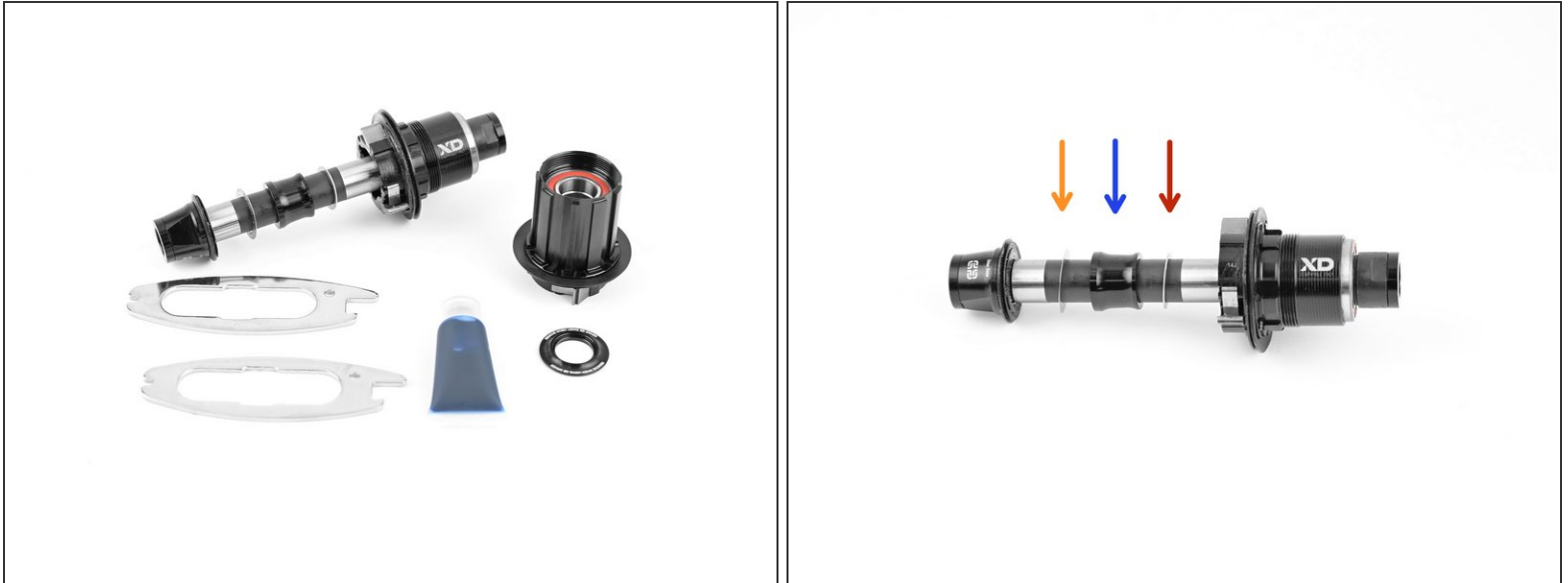




TOOLS:

- 17mm cone wrench (1)
- 18mm cone wrench (1)
- grease (1)

Step 1 — Steel Axle Install



- Start with identifying what freehub you will be using on your hub. (Shimano and XD freehubs are available for all of our hubs)

⚠ Shimano freehubs require an additional washer on the outboard side of the axle configuration. XD freehubs do not require this.

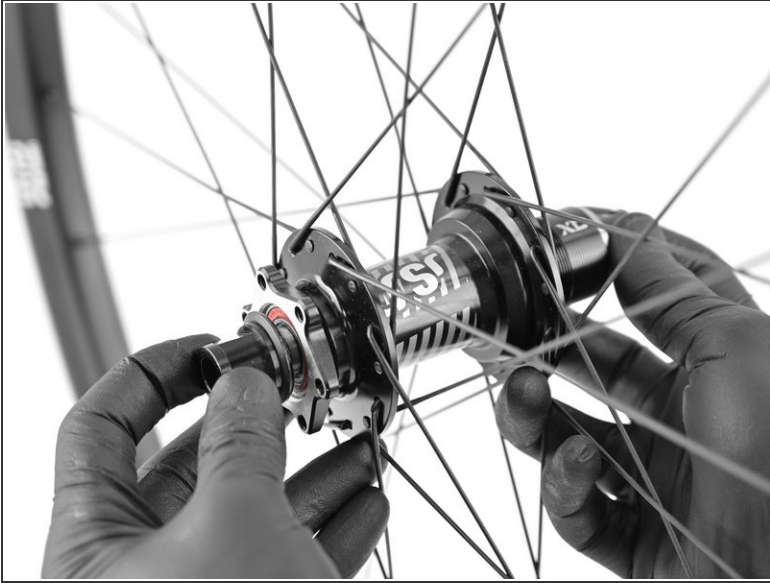
- Make sure all axle spacers are in the correct locations.
 - "freehub washer" closest to freehub
 - 2 piece axle reducer sleeve
 - wear shim (thinner and slightly larger diameter then freehub washer)

Step 2 — Steel Axle Install



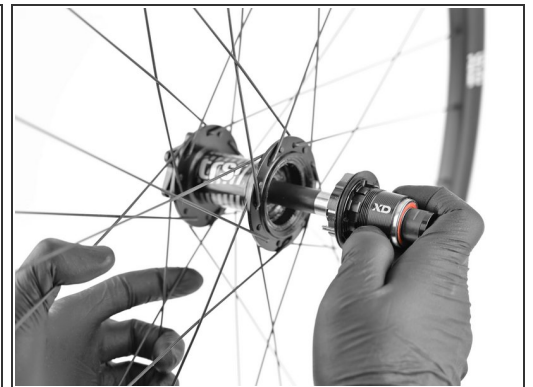
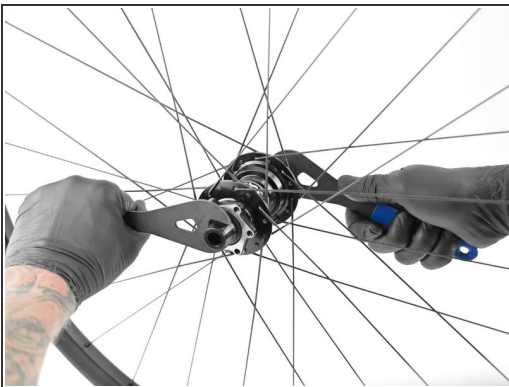
- Slide axle spacers flush against freehub internals.
- ⓘ Grease the pawls, springs and ratchet ring with provided freehub grease.
- Insert the axle into the drive side of the hub.
- Gently apply pressure to the freehub and rotate counter clockwise. This will engage the pawls and seat the freehub in the hub shell.

Step 3 — Steel Axle Install



- Apply a small drop of medium strength thread locker such as Loctite 243 to the axle threads.
- Install non-drive axle endcap.
- Using the 17mm cone wrench on the drive side axle flat and 18mm cone wrench on the non-drive endcap flats tighten to snug + 90 degrees.

Step 4 — Steel Axle Removal



- To remove the axle place the 17mm cone wrench on the drive side axle flats and 18mm cone wrench on the non-drive endcap and turn counter clockwise.
- Unthread the non-drive endcap and pull the freehub/axle out of the hub.

Thanks for reading, now get out there and ride!