



XCX Gravel rear wheel quick-start guide: How to install the axle assembly in your new wheel.

2021 to current XCX Gravel rear wheel quick-start guide

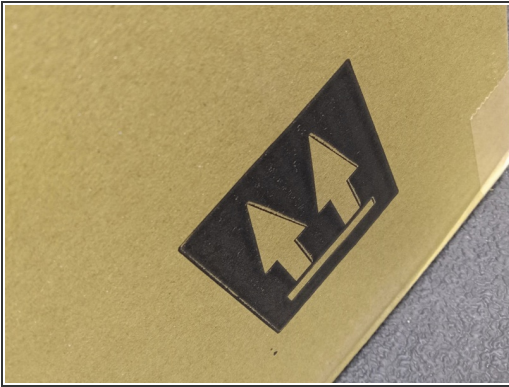
Written By: Mike Begley



INTRODUCTION

This guide will assist with axle/freehub assembly for riders who purchased an e*thirteen XCX Gravel rear wheel. The aftermarket rear wheels come with the axle and freehub assembled together in a small box included with the wheels.

Step 1 — Step 1



- Orient your box so that the top is pointing up. Open your new wheel box.
- Inside you will find a small box which contains the axle and freehub body.

Step 2 — Step 2



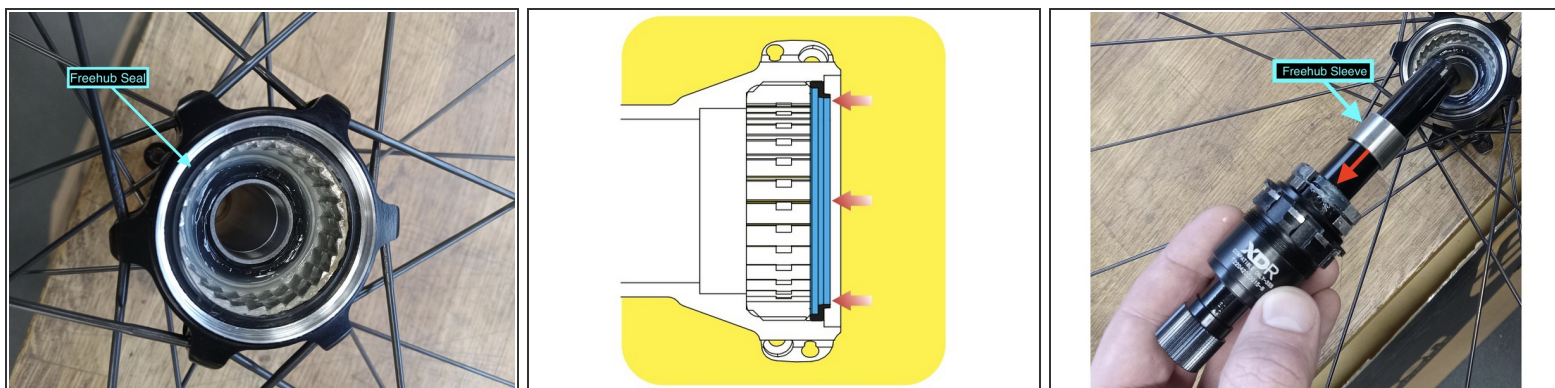
- Pull out the wheel and remove the packaging.
- Remove the freehub cap.

Step 3 — Step 3



- Open the axle box and remove your hub axle/freehub.
- Remove the non-driveside Axle endcap by pulling it away from the driveside hub axle while turning counter-clockwise. Hold the driveside of the axle in place while loosening the endcap.
- Remove the packaging from around the freehub body

Step 4 — Step 4



- Ensure your hubshell seal is completely seated and oriented in the correct direction. (This should be ok if you are assembling a new wheel, though if you have recently serviced or removed the seal its a good idea to doublecheck)
- Ensure the freehub sleeve is installed on the axle behind the freehub body.
- Slide the freehub spacer flush against freehub internals.

Step 5 — Step 5



- Insert the axle into the drive side of the hub.
- Gently apply pressure to the freehub and rotate counter clockwise. This will engage the pawls and seat the freehub in the hub shell.
- Install non-drive axle endcap. Hold the driveside of the axle in place while loosening the endcap. Apply pressure and tighten clockwise until endcap spins freely.
- You have completed your hub assembly!!!

Thanks for reading, now get out there and ride!