



XCX Gravel Hub service and setup

This guide will walk you through the freehub/axle installation process for our XCX Gravel Hubs, and includes some tips for cleaning and lubrication.

Written By: Mike Begley

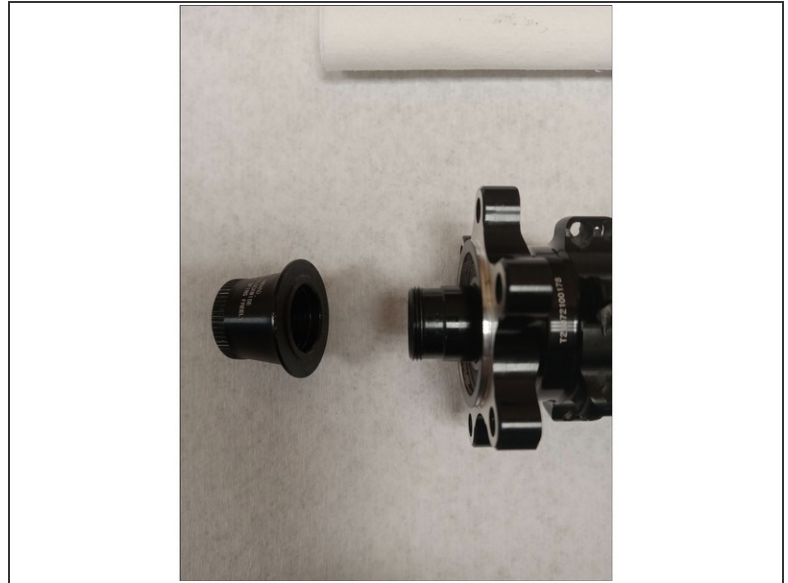
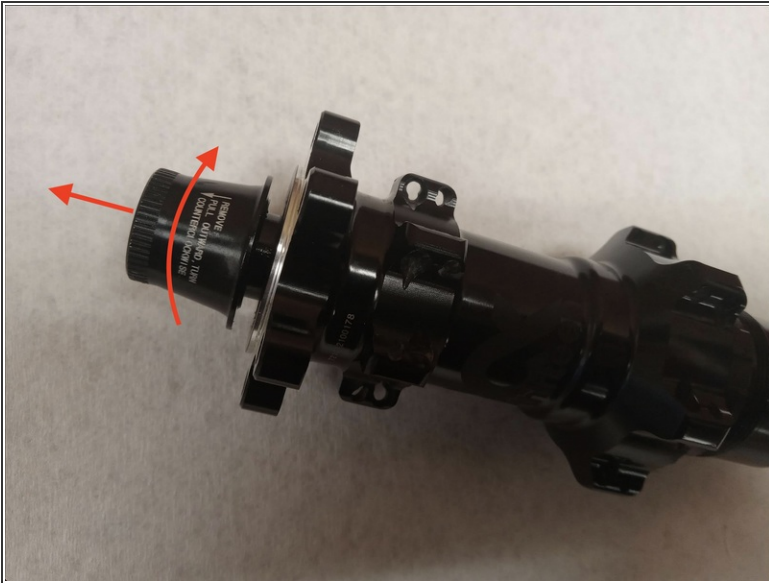


Step 1 — Setup and preparation



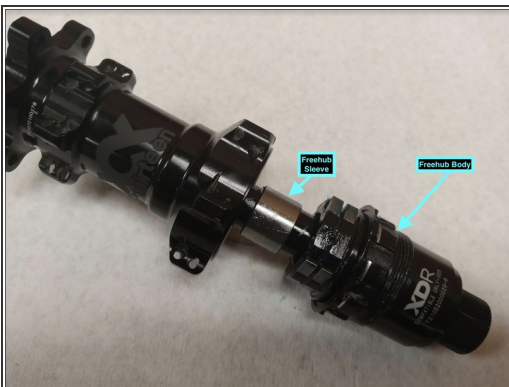
- Start with a clean work surface, have a clean rag and light freehub grease ready.
- ① The grease we use in our hubs is Mobil XHP 222.
- ⚠ XCX Gravel Hubs are only compatible with our XCX Gravel Hub Service Parts and XCX Gravel Freehub Bodies.

Step 2 — Remove Non-driveside endcap



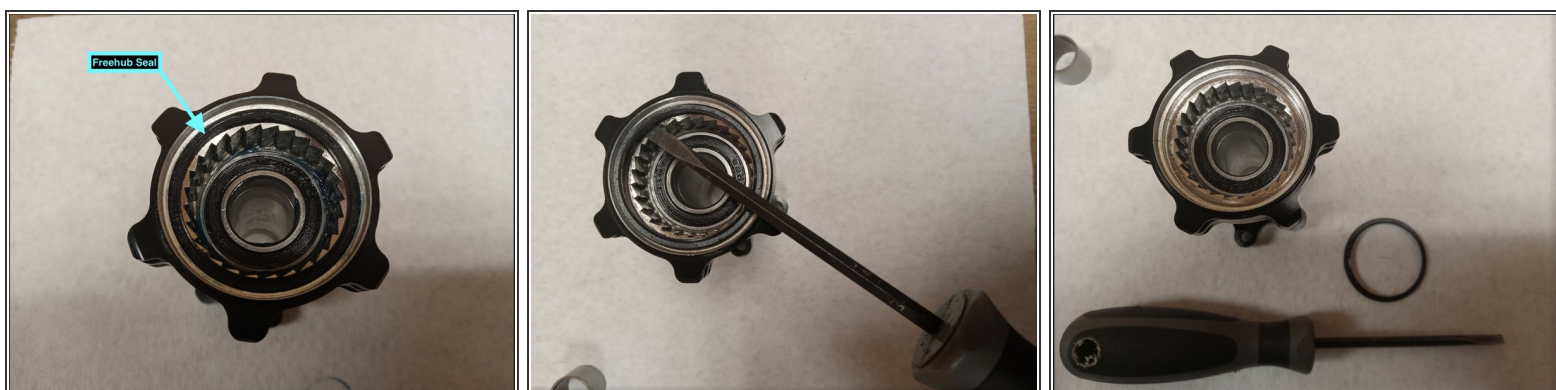
- To remove axle pull non-drive endcap away from the hub while turning counter-clockwise.

Step 3 — Remove the freehub body and axle assembly



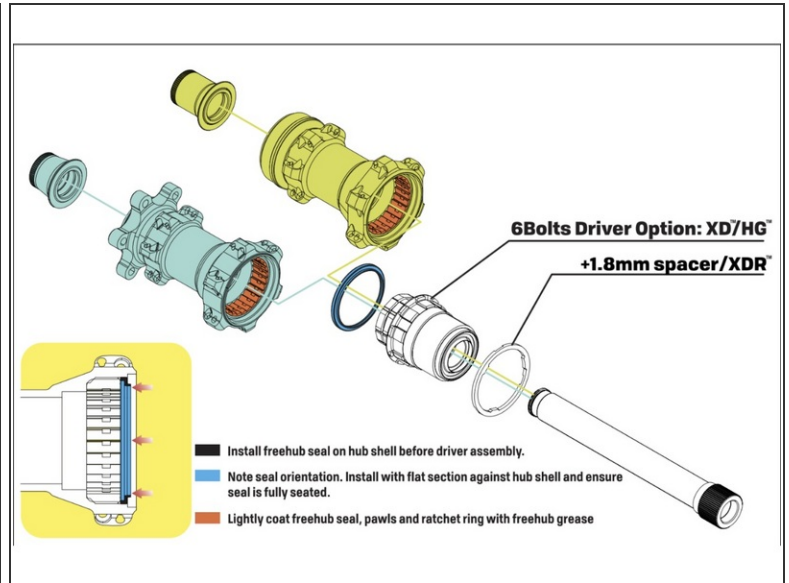
- Once the non-drive endcap is removed you can pull the freehub and axle out of the hub shell.
- ⚠ Be careful not to loose/misplace the freehub sleeve! These sleeves help to properly space the freehub body and the hub can not be used without this. If installing a different model of XCX Gravel Freehub be sure to use the sleeve which is included. This will help to ensure proper spacing/assembly.

Step 4 — Clean/Service the freehub seal



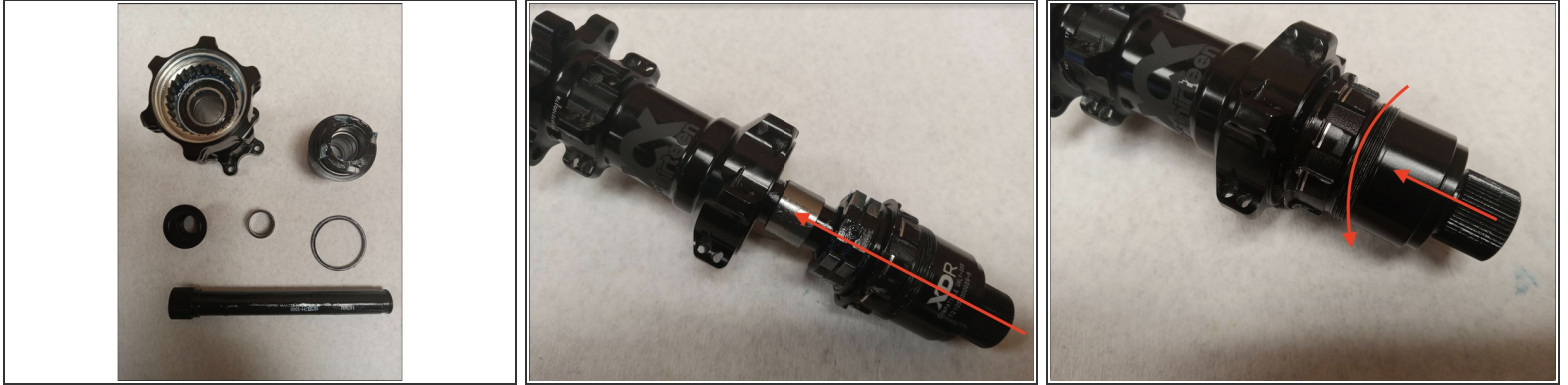
- In many cases removing the freehub seal is not necessary and the seal can be simply cleaned by wiping off old grease/debris with a clean rag.
- If your freehub seal is excessively dirty/damaged it may be a good idea to remove and service or replace it. New freehub seals are included with all of our freehub body kits.
- To remove the seal, gently pry the seal out from the hub using a sharp pick or flatblade screwdriver. Be careful not damage/bend the seal when removing.

Step 5 — Lube/Re-install the freehub seal



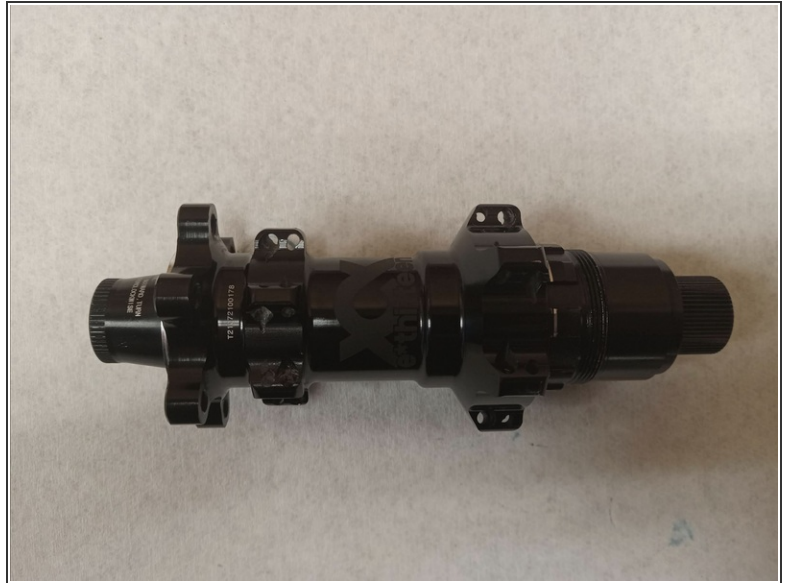
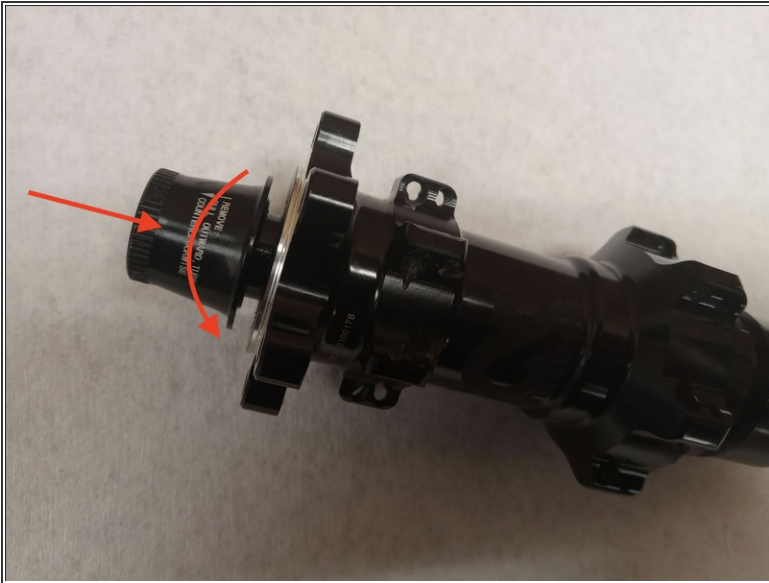
- Clean the hubshell and seal thoroughly using a clean shop rag or microfiber cloth. A mild degreaser can be used if needed.
- Lightly grease the drivering and freehub seal.
- Gently press the seal back into place, ensuring it is evenly pressed/seated in the hubshell. Please note the freehub seal is directional. The diagram in the second image shows this for reference.

Step 6 — Lubricate and re-assemble



- Clean all parts thoroughly using a clean shop rag or microfiber cloth. A mild degreaser can be used if needed.
 - Slide the freehub and freehub sleeve onto the axle, and install in the hubshell.
 - Slightly rotating the freehub body counter clockwise while reinstalling can help everything to align.
- ⚠ Freehub Sleeves are specific to freehub model. If installing a new freehub please ensure you are using the one which was included with your freehub.
- ⚠ New freehubs include a new freehub seal which can be used if needed. Its important to ensure only one seal is installed in your hubshell. Accidentally installing an additional seal can cause excess drag.

Step 7 — Re-install the non-driveside endcap



- Install non-drive axle endcap. Apply pressure and tighten clockwise until endcap spins freely.
- Wipe off any excess grease and you are good to go!

Thanks for reading, now get out there and ride!